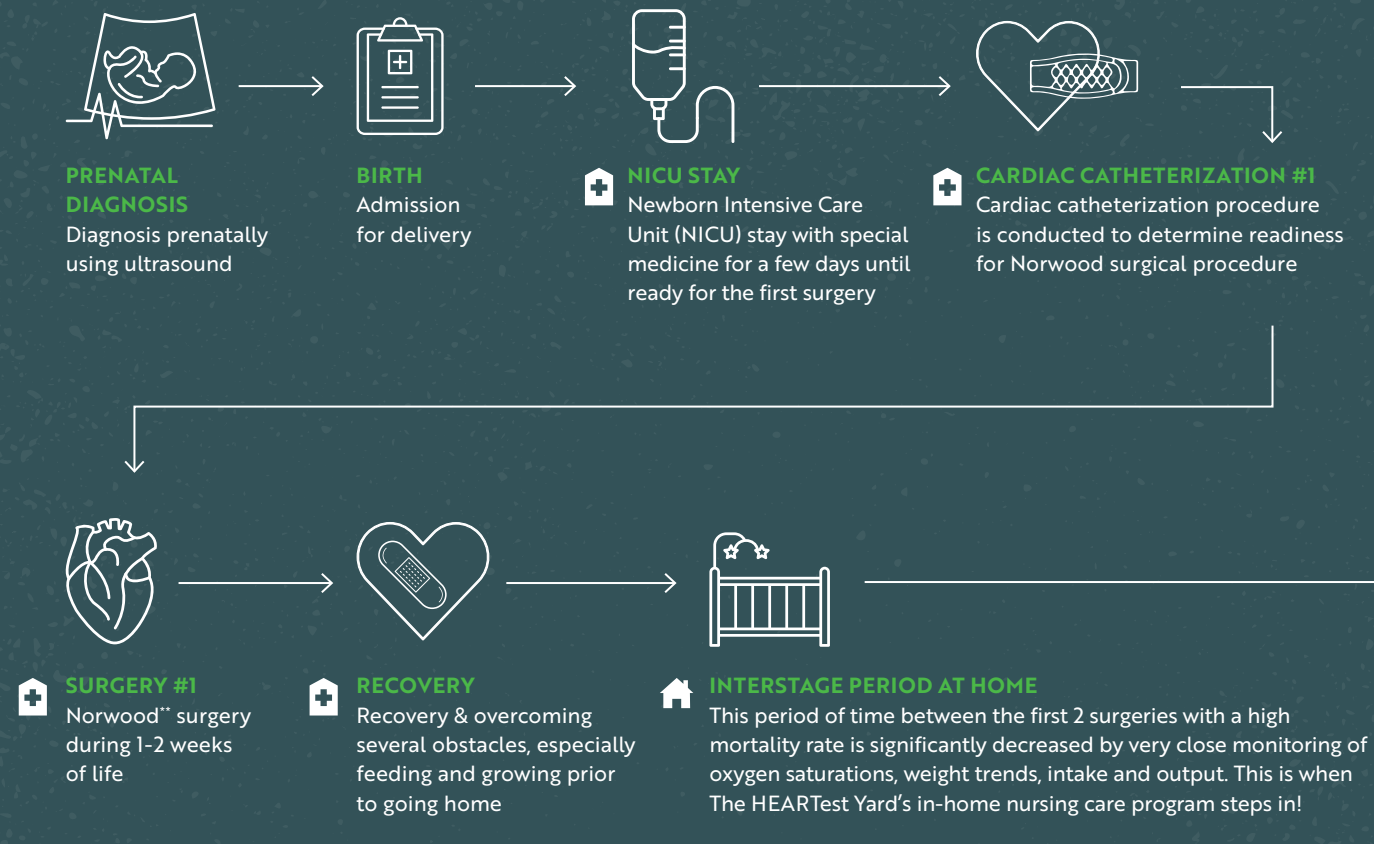


THE HEARTest YARD TOUCHPOINTS

IN A HEART PATIENT'S JOURNEY FROM BIRTH TO ADULTHOOD.

Touchpoints + Typical HLHS* Patient Flow



* HLHS means Hypoplastic Left Heart Syndrome. This is what T.J.'s heart condition diagnosis was, but not all heart journeys are the same. This is just an example of what a heart patient's journey could entail.

** Each of these - Norwood, Glenn, Fontan - are the three major surgeries that a CHD patient typically has to go through to make their heart workable.

